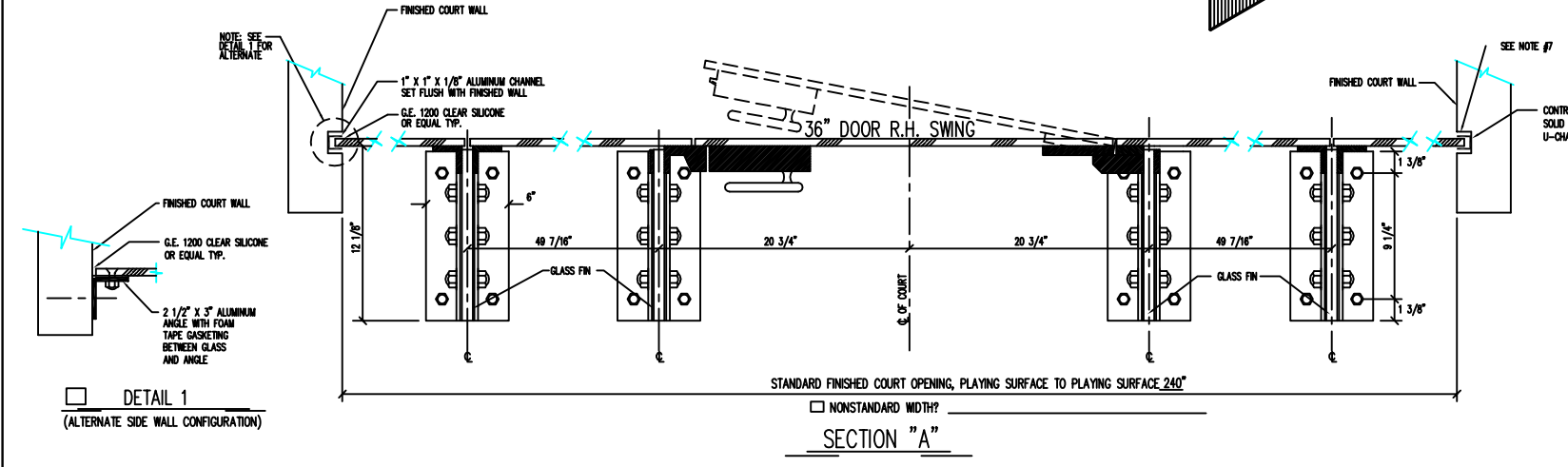
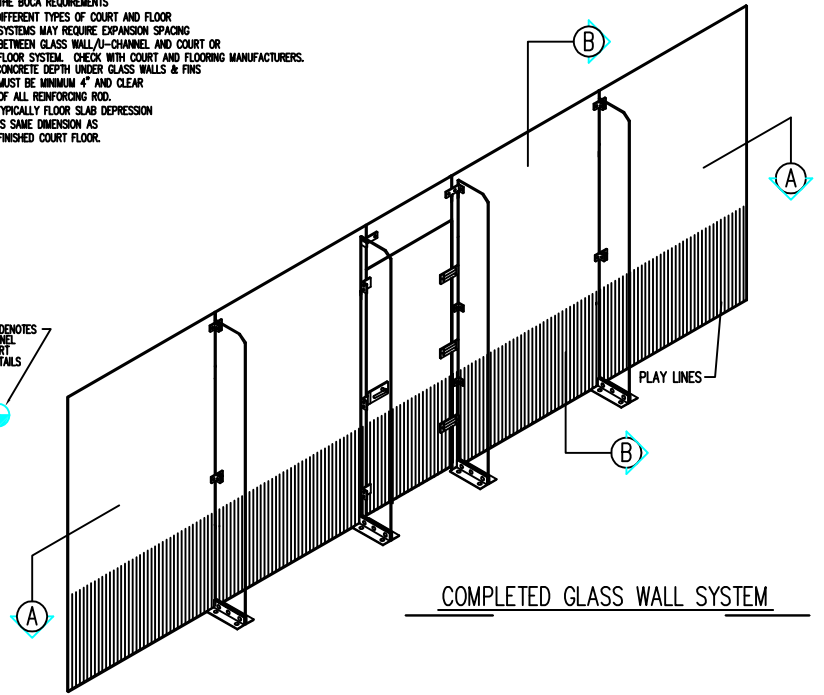
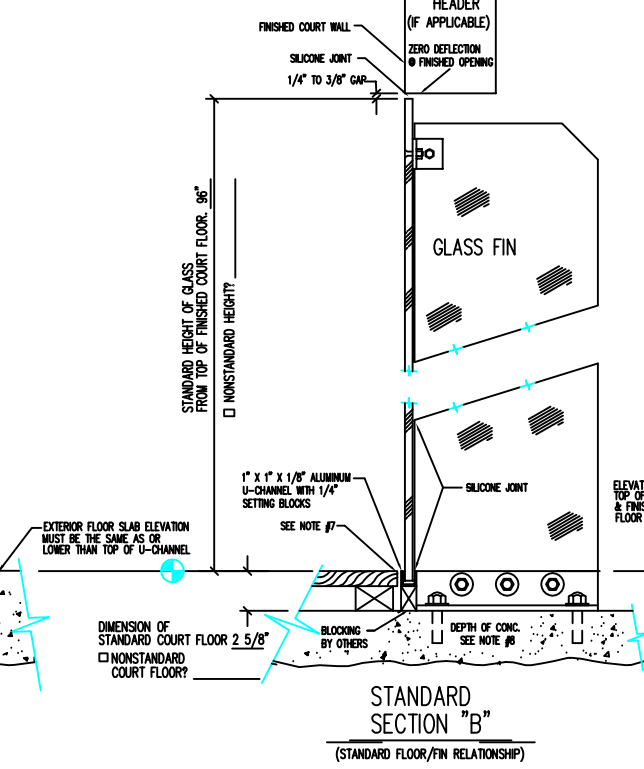
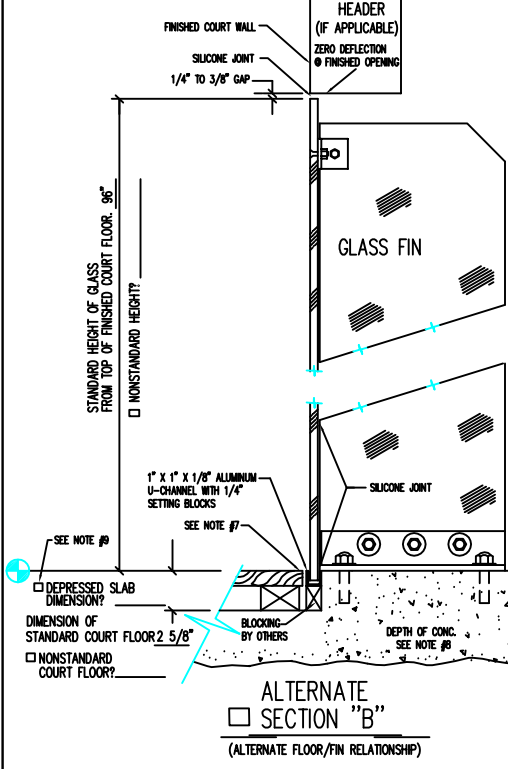


GENERAL NOTES:

- UNLESS OTHERWISE NOTED:
1. ALL GLASS 1/2" CLEAR TEMPERED.
 2. PLAY LINES ARE 1/8" WIDE, 1" ON CENTER AND 30" HIGH.
 3. DOORS ARE 36" WIDE BY 84" HIGH WITH RIGHT HAND SWING WHICH OPENS INTO COURT.
 4. ALL FASTENERS TO ATTACH ALUMINUM ANGLE/CHANNEL TO SUBSTRATE BY OTHERS.
 5. ALL GLASS CONNECTION FITTINGS ARE BLACK HIGH TENSILE POLYURETHANE.
 6. GLASS WALLS MEET AND/OR EXCEED THE BOCA REQUIREMENTS
 7. DIFFERENT TYPES OF COURT AND FLOOR SYSTEMS MAY REQUIRE EXPANSION SPACING BETWEEN GLASS WALL/U-CHANNEL AND COURT OR FLOOR SYSTEM. CHECK WITH COURT AND FLOORING MANUFACTURERS.
 8. CONCRETE DEPTH UNDER GLASS WALLS & FINIS MUST BE MINIMUM 4" AND CLEAR OF ALL REINFORCING ROD.
 9. TYPICALLY FLOOR SLAB DEPRESSION IS SAME DIMENSION AS FINISHED COURT FLOOR.



CHECK BOX IF DIMENSIONS OR ALTERNATES ARE NOT STANDARD.

NOTE: IT IS THE CLIENT'S RESPONSIBILITY TO INSURE THE DRAWING'S ACCURACY AND COMPLETENESS.

STANDARD 20' x 8' GLASS WALL		36" DOOR
REVISIONS:	DATE:	SCALE: NOT TO SCALE

DETAIL 1
(ALTERNATE SIDE WALL CONFIGURATION)